

# U-1000

## WATERLESS URINAL



### DESCRIPTION

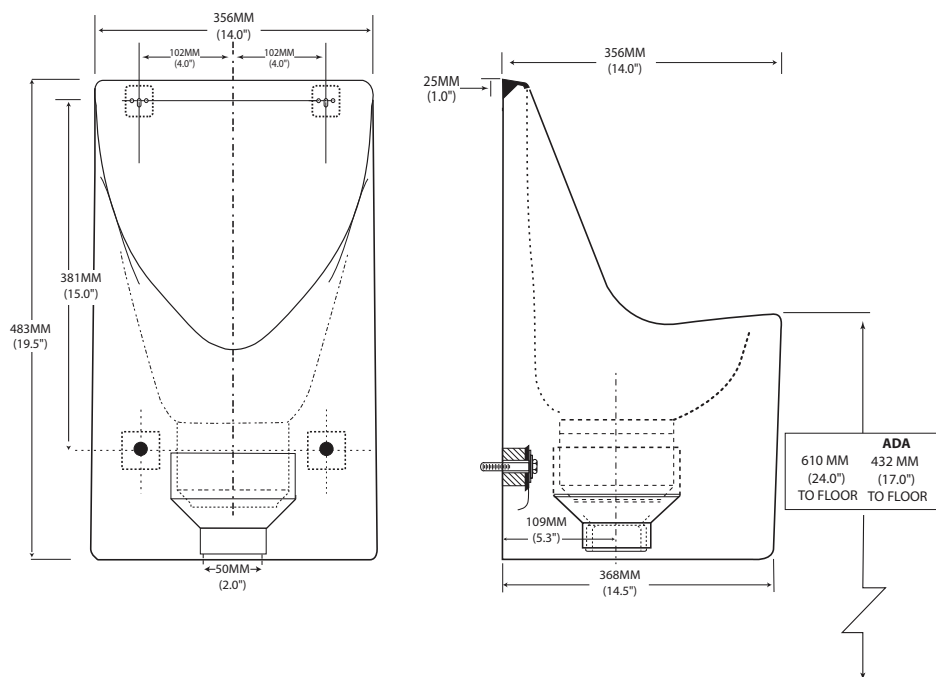
ECOJOHN Waterless Urinal Model # U-1000, wall hung, made of High Performance Composite material (HPC), **for home or commercial use**, with 2" ABS interior drain and removable trap insert. Trap insert to be of a vertical flow type with 360 degree perimeter openings and installed by press fit. Trap must be replaceable and refillable. Trap inserts are to be removed with a two pronged heavy duty stainless steel tool. Urinal 2" drain outlet installs and drains to 1.5" or 2.0" waste.

### DIMENSIONS (WxHxD)

14.0 x 19.5 x 14.0 inches (356 x 483 x 256 mm)

### APPROX. WEIGHT

16 lbs (7.3 kg)



**Trap Inside!**



### APPLICATION

- Home or Commercial

### FURNISHED WITH

- Two unit integrated wall hangers
- Fastening hardware
- **Two Traps**, vertical trap design

### Note:

Adequate trap liquid to be provided for trap of urinal, not furnished.

### COLORS

Standard white; other colors available

### FOR STANDARD INSTALLATION:

Mount at 24" above finished floor to lip of urinal or as required by architect.

Supply suitable wall support, i.e. carrier. Install and maintain as per manufacturer's instructions. Urinal 2" drain outlet installs and drains to 2" waste. Retrofit or new construction. Use standard sanitation practices to maintain fixture.

### NOTE:

Installation requires purchase of standard ABS 2" drain parts and wall screws plus washers for attachment at bottom, not included. Specify made in USA or Mexico.